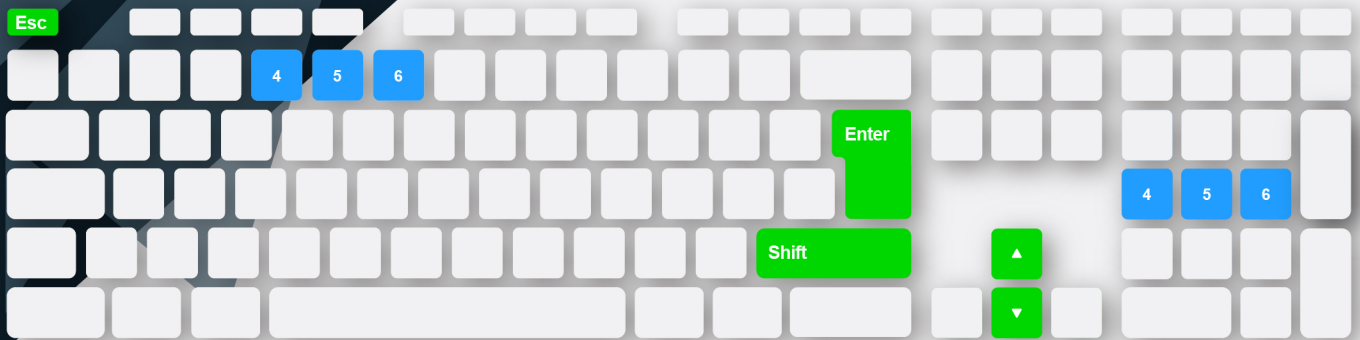


Flarm Indicator SIMULATOR USER MANUAL

Flarm Indicator simulator is Windows based software which is simulating use of *Flarm Indicator* device. As it is a simulation, some of functions of real unit are not fully implemented (beeper ...).



How to control the simulator

To control the simulator, a set of keys on keyboard is used.



Right mouse button click + drag will allow you to move the simulator window to a chosen location on your computer screen.



Up/down navigation arrows will simulate rotation of lower knob.



Enter will simulate lower knob press.



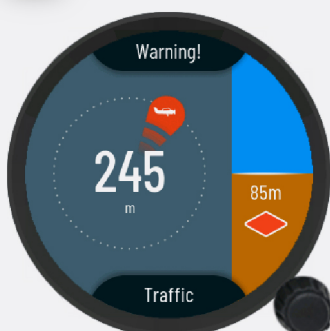
Shift will simulate lower knob LONG press.

Esc Press **Esc** to turn off simulator.

How to simulate a warning

In order to test additional functions you can simulate them with following keys.

4 **Warning** (on/off)



5 **Obstacle** (on/off)



6 **Zone** (on/off)

