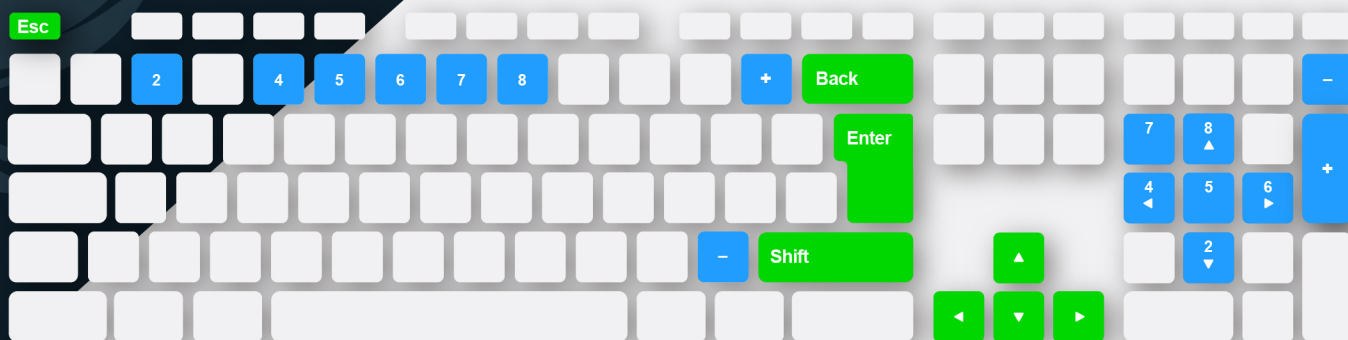


# Fenix SIMULATOR USER MANUAL

**Fenix simulator** is Windows based software which is simulating use of *Fenix* device. As it is a simulation, some of functions of real unit are not fully implemented (vario beep, external inputs connected to the unit etc ...).

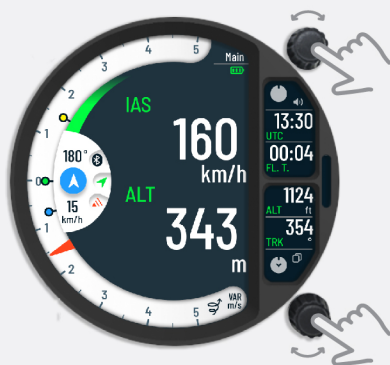


## How to control the simulator

To control the simulator, a set of keys on keyboard is used.



**Right mouse button click + drag** will allow you to move the simulator window to a chosen location on your computer screen.



**Back**

**Back**, will simulate upper knob press.



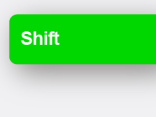
**Left/right navigation arrows** will simulate rotation of upper knob.



**Up/down navigation arrows** will simulate rotation of lower knob.



**Enter** will simulate lower knob press.



**Shift** will simulate lower knob LONG press.

**Esc**

Press **Esc** to turn off simulator. Turn off dialog will be shown. Confirm it with a press on **Enter** key.

## How to simulate a flight

In order to test in flight functions you can simulate a flight with right side keyboard.



You can **increase (+) /decrease (-) speed**.



Press to **change roll**.



Press to **change Pitch**.



Change **vario/SC mode**.



Press to **reset plane orientation**. Roll/pitch will be set to 0°.