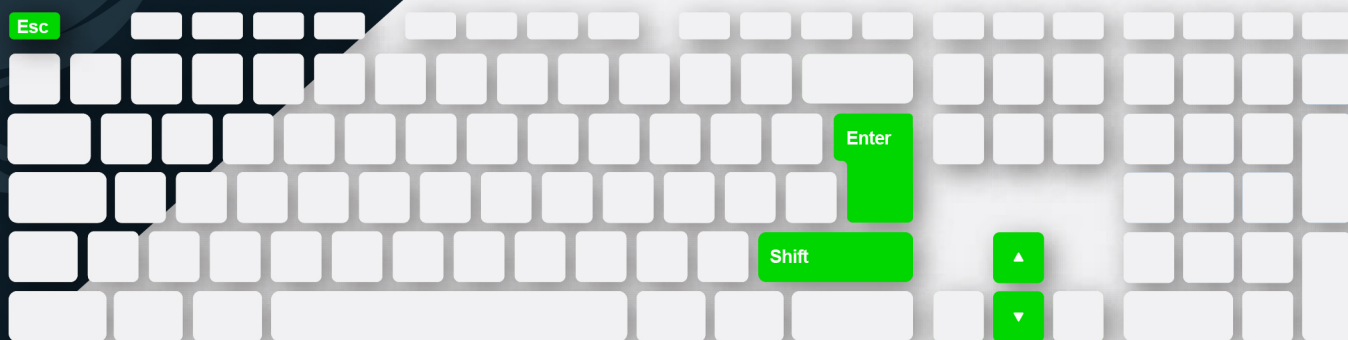


# FenixS basic SIMULATOR USER MANUAL

**FenixS basic simulator** is Windows based software which is simulating use of *FenixS basic* device. As it is a simulation, some of functions of real unit are not fully implemented (vario beep ...).

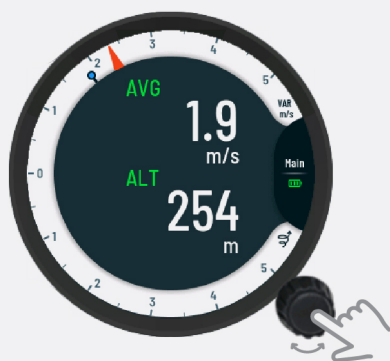


## How to control the simulator

To control the simulator, a set of keys on keyboard is used.



**Right mouse button click + drag** will allow you to move the simulator window to a chosen location on your computer screen.



**Up/down navigation arrows** will simulate rotation of lower knob.



**Enter** will simulate lower knob press.



**Shift** will simulate lower knob LONG press.

**Esc** Press **Esc** to turn off simulator.