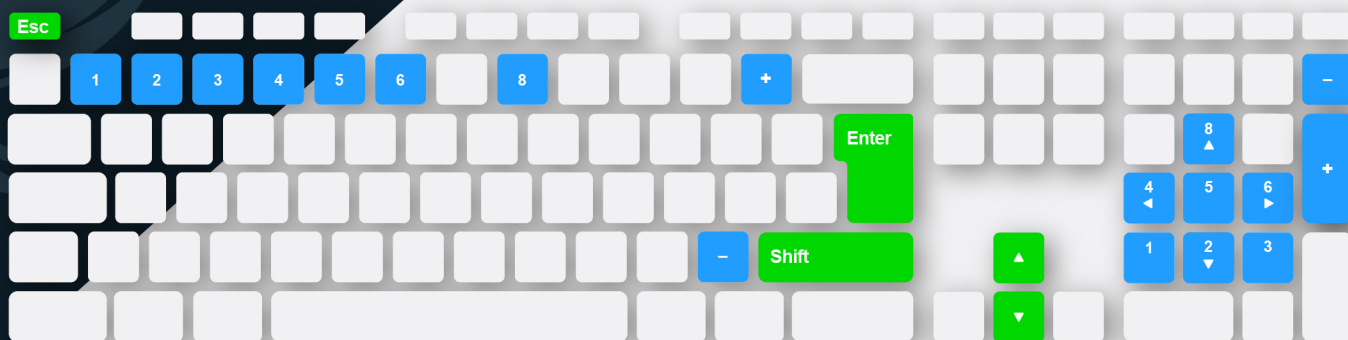


# FenixS advance SIMULATOR USER MANUAL

**FenixS advance simulator** is Windows based software which is simulating use of *FenixS advance* device. As it is a simulation, some of functions of real unit are not fully implemented (vario beep ...).

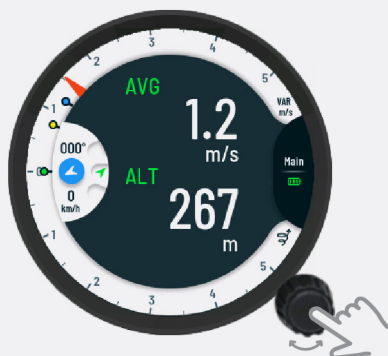


## How to control the simulator

To control the simulator, a set of keys on keyboard is used.



**Right mouse button click + drag** will allow you to move the simulator window to a chosen location on your computer screen.



**Up/down navigation arrows** will simulate rotation of lower knob.



**Enter** will simulate lower knob press.



**Shift** will simulate lower knob LONG press.

**Esc** Press **Esc** to turn off simulator.

## How to simulate a flight

In order to test in flight functions you can simulate a flight with right side keyboard.



You can **increase (+) /decrease (-) speed.**



Press to **change roll.**



Press to **change pitch.**



**Flarm warning** (on/off)



**Flarm obstacle** (on/off)



**Press to reset plane orientation.** Roll/pitch will be set to 0°.